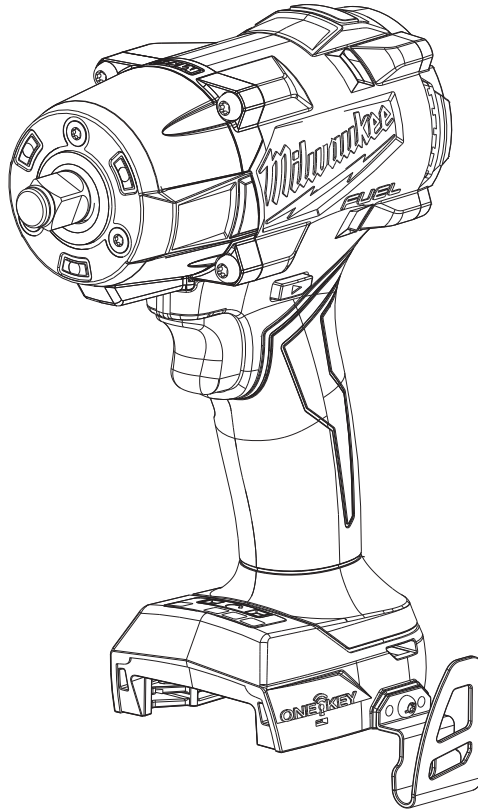




# SERVICE PARTS LIST

BULLETIN NO.  
54-26-3050

SPECIFY CATALOG NO. AND SERIAL NO. WHEN ORDERING PARTS		REVISED BULLETIN	DATE
M18™ FUEL™ 1/2" Friction Ring Controlled Mid-Torque Impact Wrench			Sept. 2023
CATALOG NO.	3062-20	SERIAL NO.	N62A
		WIRING INSTRUCTION See Page 4	



This product is to be serviced **ONLY** by personnel authorized by MILWAUKEE TOOL. Do **NOT** attempt to purchase parts and install them yourself. Installation by anyone other than an authorized MILWAUKEE personnel could void your warranty.

**For service, parts, or inquiries, contact us:**

- Customer Service at 1.800.SAWDUST (1.800.729.3878)
- E-Service tool repair at: [www.milwaukeetool.com/e-service](http://www.milwaukeetool.com/e-service)
- Find a local approved MILWAUKEE service location at [Milwaukeetool.com](http://Milwaukeetool.com)
- Find a MILWAUKEE *factory* Service Center Location or MILWAUKEE *factory* Central Repair Center at [Milwaukeetool.com](http://Milwaukeetool.com). Send the following, posted paid and insured:
  - Your name, address, and phone number
  - Description of the issues
  - Copy of the proof of purchase
  - Tool, charger, and batteries involved with the issues

**MILWAUKEE *factory* Central Repair Centers:**

MILWAUKEE TOOL  
Central Repair  
1401 Sycamore Avenue  
Greenwood, MS 38930

MILWAUKEE TOOL  
Central Repair  
2198 Southtech Drive  
Greenwood, IN 46143

# SERVICE PARTS EXPLODED VIEW

**EXAMPLE:**  
 00 0 Component Parts (Small #)  
 Are Included When Ordering  
 The Assembly (Large #).

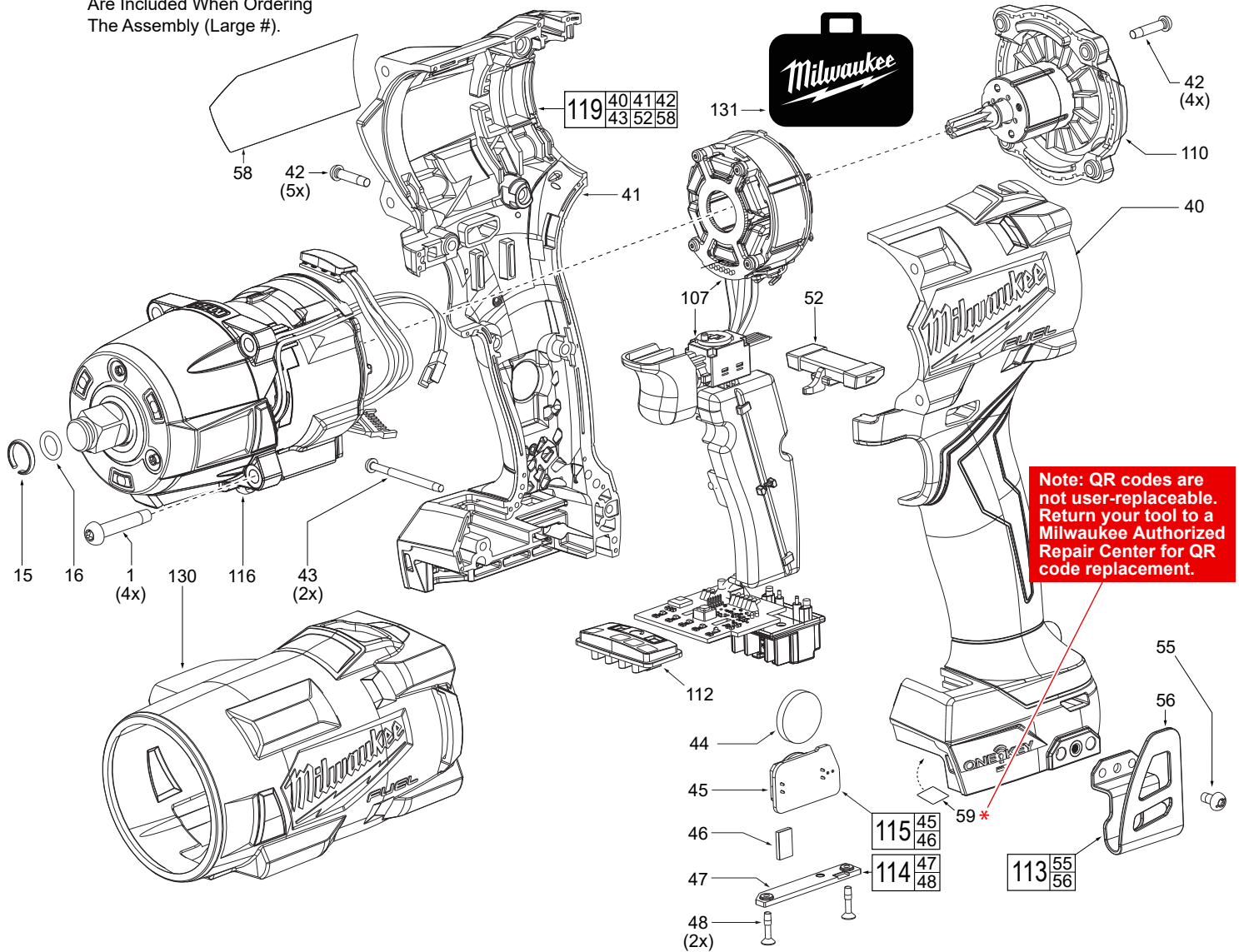


FIG.	PART NO.	DESCRIPTION OF PART	NO. REQ.
1	06-82-2366	Gearcase Screw	(4)
15	44-90-4530	Friction Ring	(1)
16	34-40-0900	O-Ring	(1)
40	-----	Right Housing Halve-Cover	(1)
41	-----	Left Housing Halve-Support	(1)
42	06-82-2368	M3 x 1.058 Pan Hd. ST T-10 Screw	(9)
43	06-82-2367	M3 x 1.058 Pan Hd. ST T-10 Screw	(2)
44	-----	Coin Cell Battery	(1)
45	-----	Coin Cell PCBA	(1)
46	-----	Foam Pad	(1)
47	-----	Coin Cell Cover	(1)
48	-----	M2.6 PH ST Screw	(2)
52	45-42-8200	Forward/Reverse Shuttle	(1)
55	06-82-2500	6-32 x 7mm Pan Hd. Tapt. T-15 Screw	(1)
56	42-70-5151	Belt Clip	(1)
58	12-20-9915	Service Nameplate	(1)
59	-----	QR Code Label	(1)
108	14-20-9385	Electronics Assembly	(1)
110	16-01-6030	Rotor/Back Cap Assembly	(1)
112	45-24-2860	Speed Selector Assembly	(1)
113	42-70-0950	Belt Clip Kit	(1)

FIG.	PART NO.	DESCRIPTION OF PART	NO. REQ.
114	45-04-7015	Cell Cover Screw Assembly	(1)
115	22-09-0015	Coin Cell PCBA Assembly	(1)
116	14-29-8845	Gearbox Assembly	(1)
119	14-38-7070	Handle Housing Kit	(1)
130	49-16-3062	Rubber Boot (Accessory)	(1)
131	48-53-3062	Blow Molded Carrying Case	(1)

SCREW TORQUE SPECIFICATIONS				
FIG.	PART NO.	WHERE USED	SEAT TORQUE	
			(kgf-cm)	(lbs-in)
1	06-82-2366	Gearcase Assy.	38±3	33±3
42	06-82-2368	Right Housing Halve	11±1	10±1
42	06-82-2368	Rotor/Back Cap Assy.	9±1	8±1
43	06-82-2367	Right Housing Halve	11±1	10±1
48	-----	Cell Cover Screw Assy.	4±1	3±1
55	42-70-5151	Belt Clip	4±1	3±1