



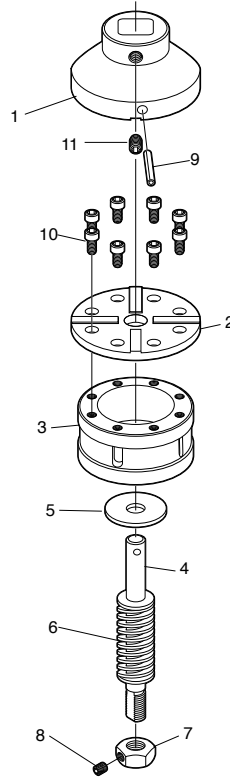
PIPE TOOLS & VISES
SINCE 1896

Instructions for VOKCLUTCH

Clutch fits into Power Drives made for R12+ or 12R Dropheads. Reed recommends use with Reed 700PD Power Drive.

1. Clutch is factory preset to approximately 150 ft-lbs.
2. Insert the 05281 Clutch into the Power Drive.
3. Mount the tool onto the valve stem and begin turning the valve.
4. When the Clutch slips, you have reached approximately 150 ft-lbs.

WARNING: THIS TOOL PRODUCES A HIGH AMOUNT OF TORQUE. OPERATE SO THE DIRECTION OF ROTATION IS AWAY FROM THE OPERATOR, OPERATE THE TOOL USING BOTH HANDS, AND MAINTAIN SECURE FOOTING.



Valve Operator Clutch

#05281 VOKCLUTCH
#05288 VOK700PD

Parts List

Ref. No.	Description	Item Code	Qty. Used
1	Socket	45282	1
2	Plate	45283	1
3	Driver	45284	1
4	Shaft	45285	1
5	3/4" Washer	34910	1
6	Die Spring	45281	1
7	Adjuster Nut	95286	1
8	Set Screw	35292	1
9	Split Pin	35285	1
10	1/4-20 SHCS	34506	8
11	Set Screw	30238	1

Reed Manufacturing Company
1425 West 8th Street
Erie, PA 16502 USA

QUALITY
& Service
that Last a Lifetime

Phone: 800-666-3691 or 814-452-3691
Fax: 800-456-1697 or 814-455-1697
www.reedmfgco.com

1110-55281