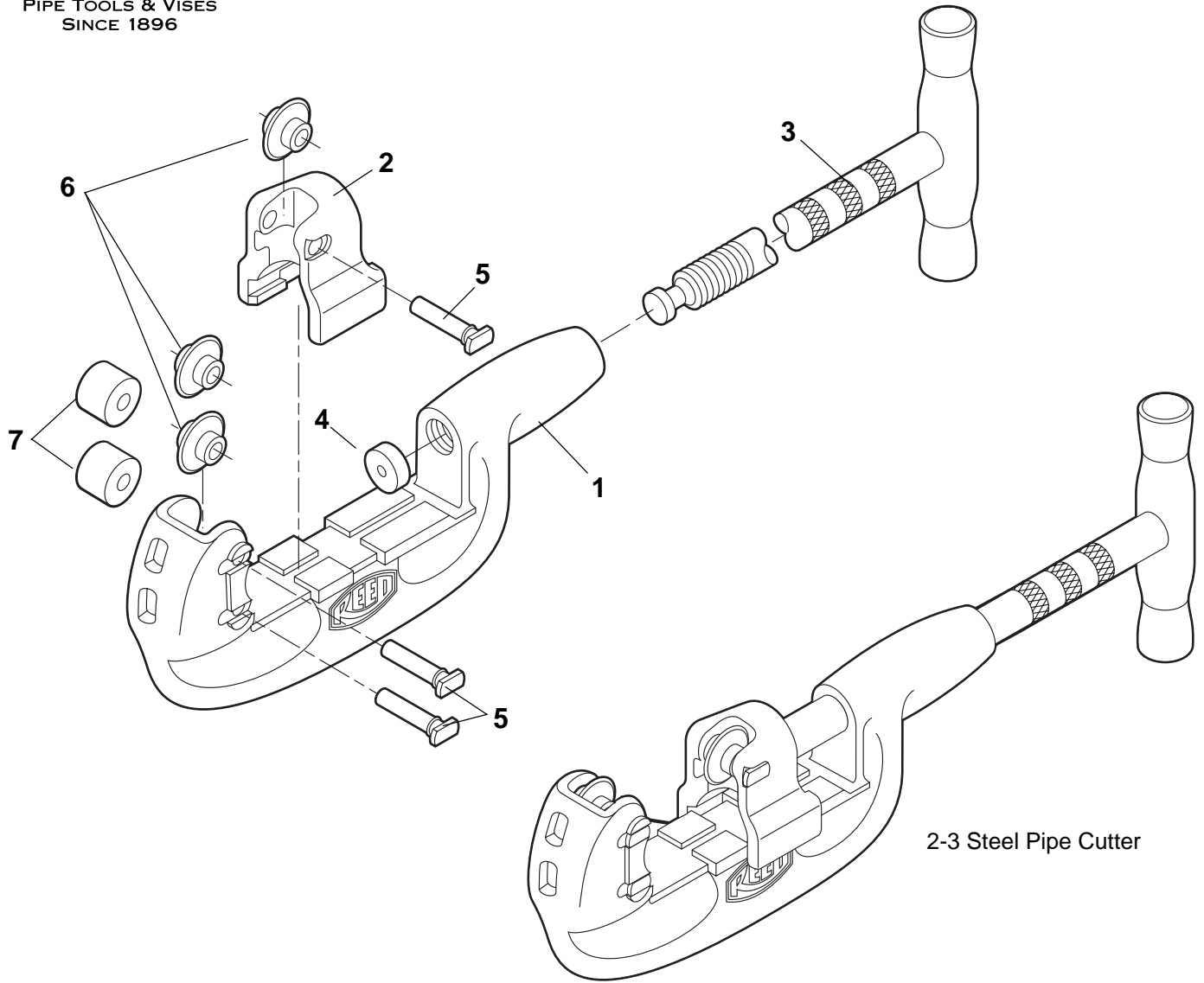




PIPE TOOLS & VISES  
SINCE 1896

# Steel Pipe Cutters (2-1, 2-3, 2-4)

Replacement Parts



## Parts List

| Ref.<br>No. | Description     | 2-1<br>#03320 |      | 2-3<br>#03305 |      | 2-4<br>#03335 |      |
|-------------|-----------------|---------------|------|---------------|------|---------------|------|
|             |                 | Item<br>Code  | Qty. | Item<br>Code  | Qty. | Item<br>Code  | Qty. |
| 1           | Cutter Body     | 93673         | 1    | 96373         | 1    | 96373         | 1    |
| 2           | Block           | 93674         | 1    | 93674         | 1    | 93680         | 1    |
| 3           | Handle Assembly | 93675         | 1    | 93675         | 1    | 93681         | 1    |
| 4           | Thrust Cup      | 93679         | 1    | 93679         | 1    | 93679         | 1    |
| 5           | Pins            | 93310         | 3    | 93310         | 3    | 93310         | 4    |
| 6           | Cutter Wheels   | 03612         | 1    | 03612         | 3    | 03612         | 4    |
| 7           | Rollers         | 93312         | 2    | —             | —    | —             | —    |

Reed Manufacturing Company  
1425 West 8th Street  
Erie, PA 16502 USA

**QUALITY**  
& Service  
that Last a Lifetime

Phone: 800-666-3691 or 814-452-3691  
Fax: 800-456-1697 or 814-455-1697  
www.reedmfgco.com

RP-209-52